



CAROLINA
THREAD
TRAIL

CREEKS, TRAILS AND COMMUNITY: STEWART CREEK GREENWAY AND STREAM REHABILITATION

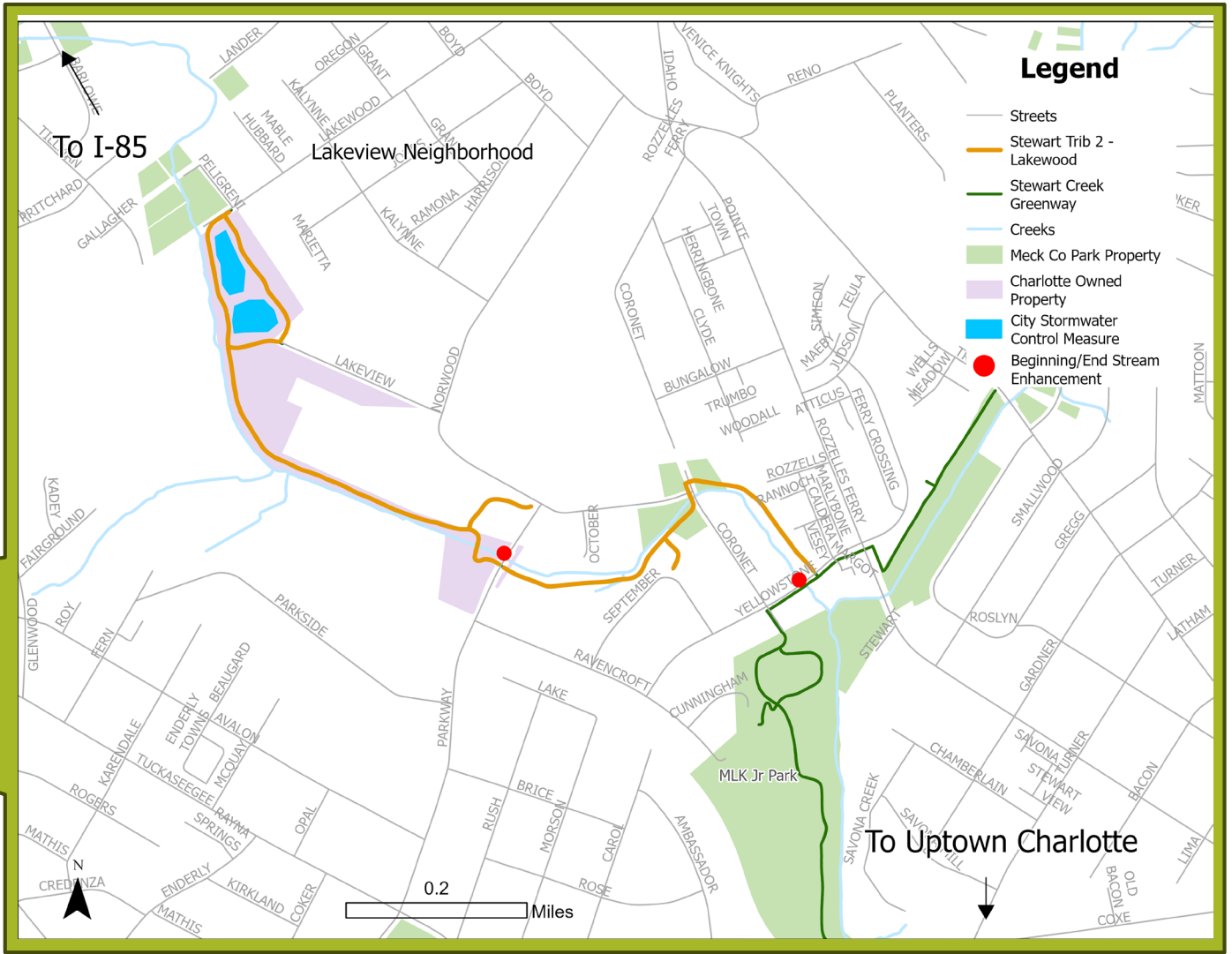
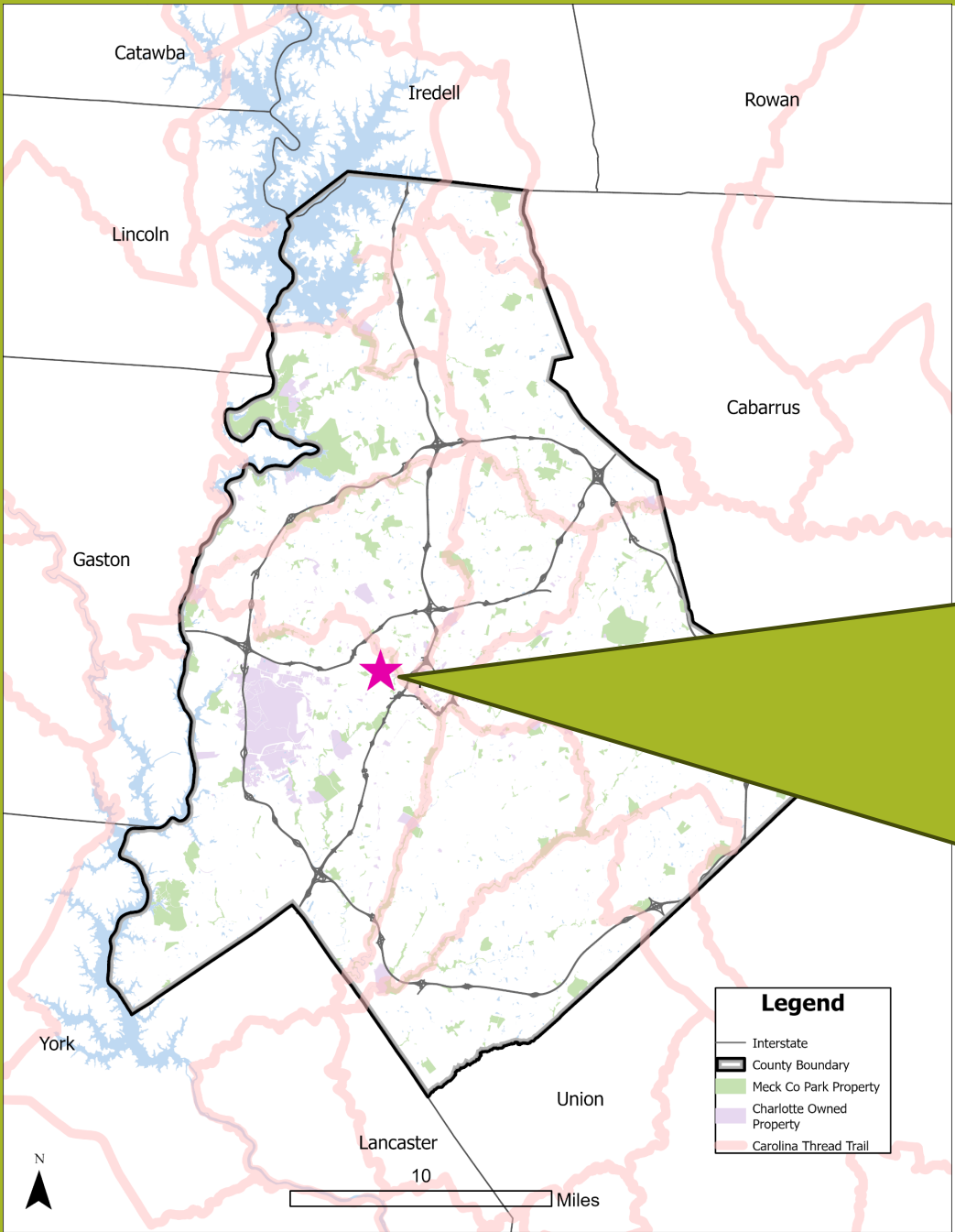


Mecklenburg County
Park and Recreation



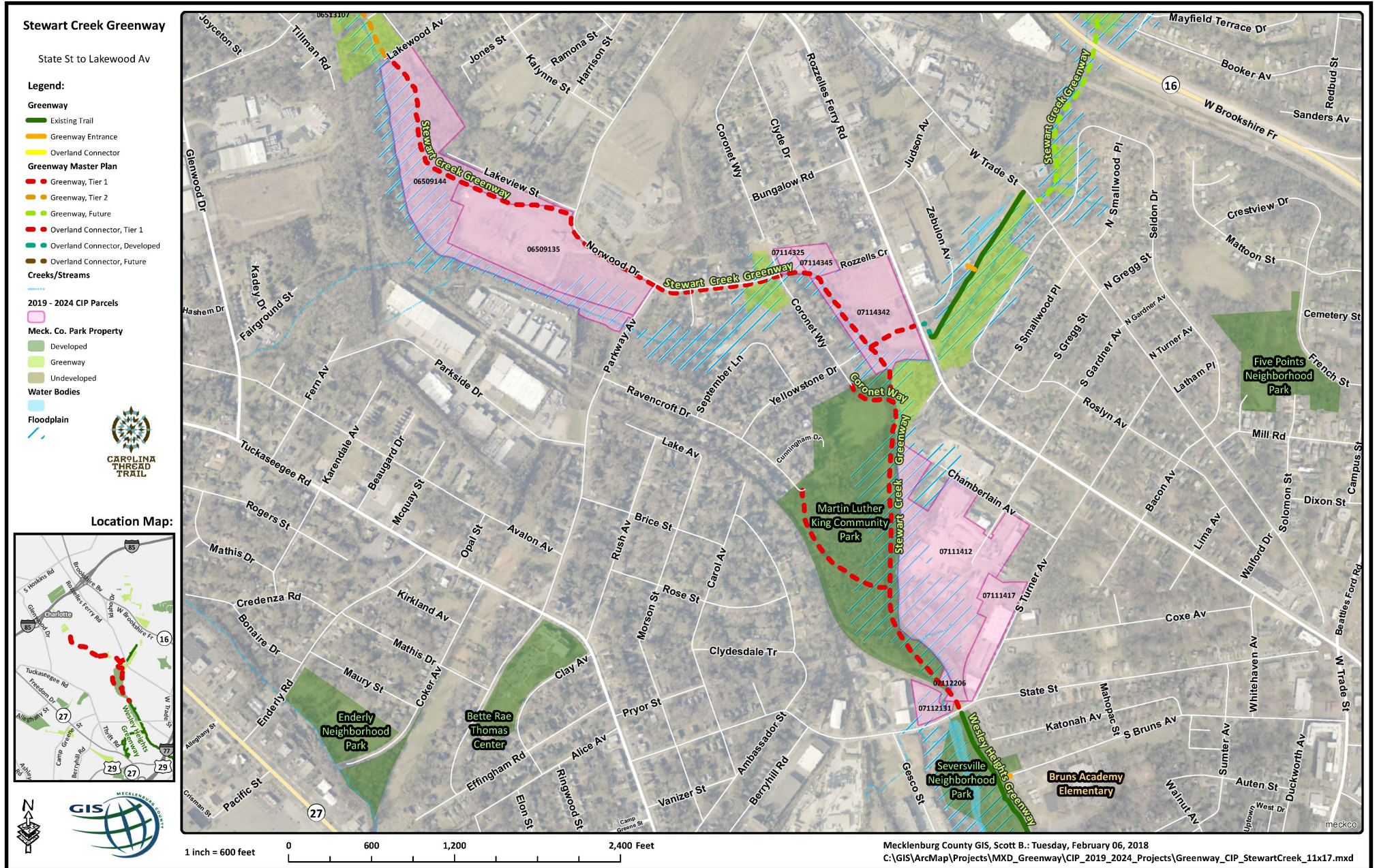
Kimley»Horn





PROJECT LOCATION

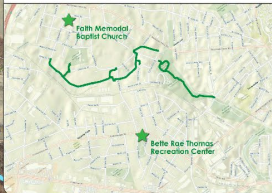
2018



2019



PUBLIC MEETING LOCATIONS



KEY

- Proposed Stewart Creek Trib Greenway
- Future Overland Connector
- Future Stewart Creek Trib Greenway
- Connector Trail
- Existing Stewart Creek Greenway
- Stream
- Existing Permanent Greenway Easement
- Parcel Lines
- Proposed Bridge
- Trailhead
- Mecklenburg County Owned Property
- City of Charlotte Owned Property



Construction Start: Winter 2019
Project Length = 1.98 Miles

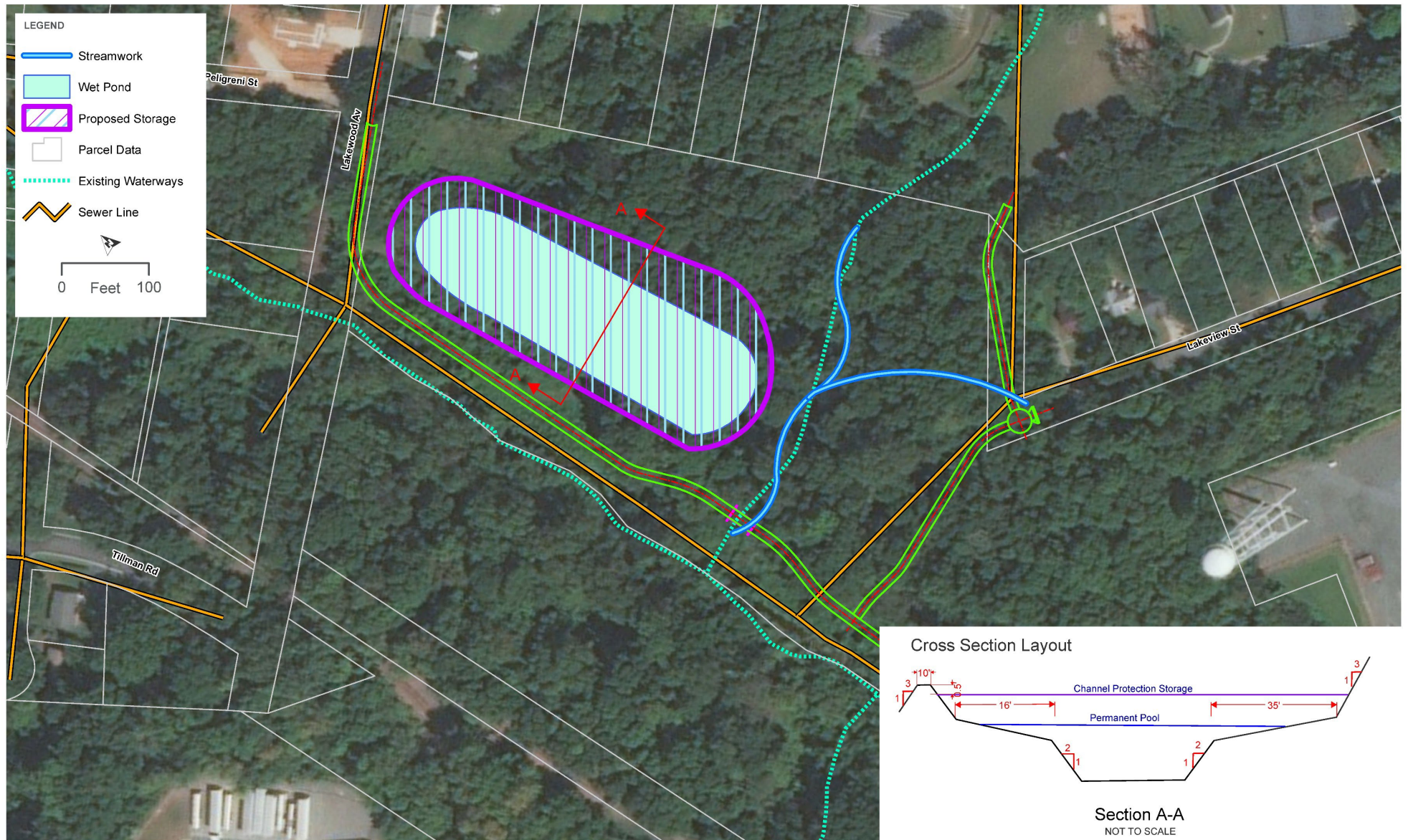
Future State Street Crossing Improvements (City of Charlotte)

Scale 1:100

Stewart Creek Trib Greenway and Stream Enhancement

Kimley»Horn

2019



LAKWOOD SCM LOCATION
PRELIMINARY LAYOUT - NOT FOR DESIGN
FIGURE 1

2020-21



